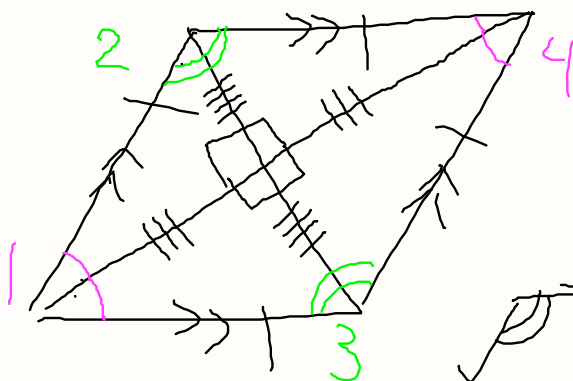


MEASURING  
UP  
LESS. 44

PARALLELOGRAM

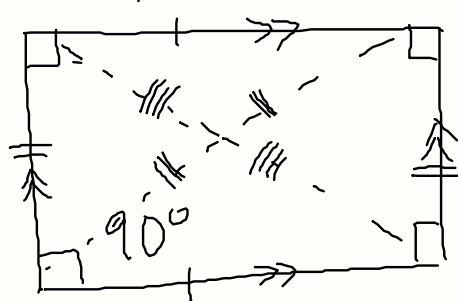


RHOMBUS



$m\angle 1 + m\angle 2 = 180$   
CONSECUTIVE ANGLES  
 $m\angle 2 + m\angle 4 = 180$

RECTANGLE

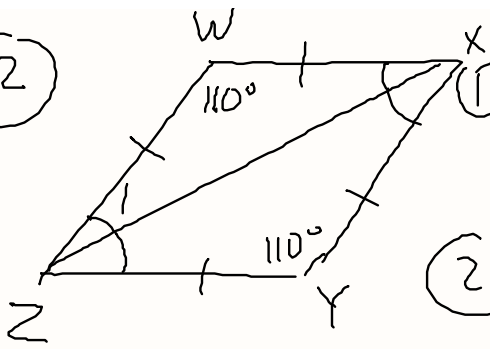


BISECT - SPLIT  
SOMETHING  
INTO 2 EQUAL  
PARTS



ISOSCELES  
TRAPEZOID

②



①  $m\angle X + m\angle Z = 360^\circ - 110^\circ \cdot 2 =$   
 $= 360^\circ - 220^\circ = 140^\circ$

②  $\angle Z = \angle X = \frac{140^\circ}{2} = 70^\circ$

③  $\angle 1 = \frac{70^\circ}{2} = 35^\circ$

PRACTICE INDEPENDENT

p. 203 # 1-7, 9

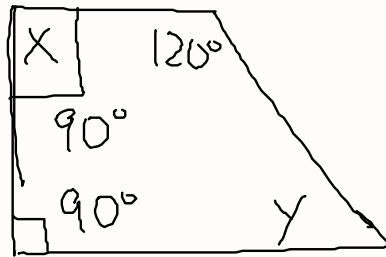


$A \cup B$   
 $A \cap B$

p. 17

④ C

⑤



$$Y = 360^\circ - (90^\circ \cdot 2 + 120^\circ) = 60^\circ$$

⑥ C

6